

Serie Lucciola	Serie Architectural	Serie Halled	Serie Hyperion					Serie Cyclorama	
30W Pinspot	50W Fresnel, PC, Profile	85W Downlight	100W Fresnel, PC, Profile	200W Fresnel, PC, Profile	300W Fresnel, PC, Profile	300W Followspot	700W Fresnel, PC, Profile	700W Followspot	300W Cyclorama

#### SOURCE

- 700W LED ARRAY
- For LUMINOUS FLUX and COLOR RENDERING INDEX (CRI) refer to the related table

#### HOUSING

- Highly resistant body in extruded aluminum and techno-polymer body
- IP 20
- Finishing: black (other RAL color on request)

#### ELECTRICAL

- Power consumption: 700 W
- Power supply: 100-240 V – 50/60 Hz
- PF>0.94/230VAC PF>0.98/115VAC at full load

#### THERMAL MANAGEMENT

- Wide ventilation slots for better LED cooling with 3 selectable FAN MODE
- High efficiency heat pipe cooling system
- Ta max 40°C

#### CONNECTION

- Power connector: chassis PowerCON TRUE1 In/Out
- Additional cable: 2m H05RN-F cable with powerCON TRUE1 female cable connector
- DMX: XLR 5-pole In/Out panel connectors

#### OPTICS

- 250mm high-quality glass lens
- Focus: manual and motorized (on request)
- Gobo size: B (only for Profile)
- For beam angles refer to the related table

#### OPTIONS

- Pole Operated yokes
  - ARC Motorized yokes
- more info [here](#)

#### COMPLIANCE

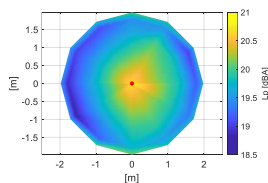
- CE
- EN 60598-1; EN 60598-2-17
- SSL Licensing Program
- Manufactured in Italy with Quality System ISO 9001:2015

#### NOISE LEVEL DATA (silent mode)

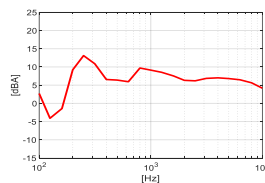
Conditions during measurements:

- Test in hemi-anechoic room
- Temperature: 22°C
- Relative humidity: 79%
- Radius of spherical measuring surface: 2m

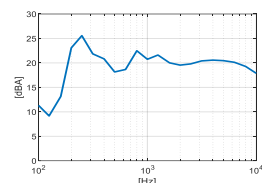
Diagram of Sound Pressure level  $L_p$  [dBA], the red point identifies the direction of maximum noise emission <sup>1</sup>



Sound pressure level spectrum [dBA] measured at maximum noise emission point



Sound power level spectrum  $L_{WA}$  [dBA]



Total sound pressure level  $L_p$  (0.1 – 10 kHz, ref.  $2 \times 10^{-5}$  Pa) at different distances<sup>2</sup>:

Distance	1 m	2 m	4 m	6 m
Sound pressure level $L_p$	26.8 dBA	20.8 dBA	14.8 dBA	11.3 dBA

#### SOFTWARE FUNCTIONS

- ESD: 8bit or 16bit
- Up to 6 DIMMING CURVE **Mark-II**
- LED DELAY: from 0 to 2000ms
- AMBER SHIFT, in combination whit HALO dimming curve and LED delay, in order to emulate the performances of a halogen lamp (only for 8C version)
- PWM LED 500Hz-20KHz
- ± GREEN in order to guarantee a fine adjustment of green component of CCT (only for 8C version)
- OUTPUT FREQUENCY in order to remove flickering
- LED BOOST in order to increase +20% the light output of a fixture when for a tint or CCT when not all LED channels are at full (only for Tunable White and 8C versions)
- FAN MODE: selectable from fixture (AUTO, STANDARD, SILENT) or remote from DMX
- LED CALIBRATION in order to adjust the tints of a group of fixtures when/if they aren't aligned, despite being set with the same DMX values (only for 8C version)
- SERVICE CHANNEL in order to control all the settings that are normally set from the fixture by using a console
- STAND-ALONE and MASTER AND SLAVE in order to control one or more fixtures without using a console, creating one or multi scenes
- DISPLAY ROTATION and DISPLAY ON/OFF
- BOARD TEMPERATURE and CHIP TEMPERATURE in order to monitor how the fixture works **Mark-II**
- WIRELESS DMX ready **Mark-II**
- Hour-counter on single LED
- Storage and factory recovery
- Upgradable firmware via DMX/USB tool
- Advanced remote settings (RDM) for all parameters via DMX
- ERROR LIST in order to display errors that can occur

#### COLOR and CCT PRESETS

- Manual control **Mark-II**
  - o MANUAL PRESET: CCT (9) + LEE FILTERS (66) + custom (10)
  - o MANUAL COLOUR: LEE filters (66) + custom (19)
  - o MANUAL CCT: CCT (36)
- DMX control:
  - o LEE FILTERS channel: standard (241) + custom (14) **Mark-II**
  - o ROSCO FILTERS channel: standard (236) + custom (19) **Mark-II**
  - o CCT channel: TW (2700-6500K) / 6C/8C (1500-20000K) **Mark-II**

#### DIMENSIONS

FN	18 Kg	600*500*400 mm
PC	20 Kg	690*500*400 mm
PR (ZS)	31 Kg	1270*470*400 mm
PR (ZW)	28 Kg	920*470*400 mm

<sup>1</sup>The positive direction of X axis corresponds to the spotlight central axis and points in the direction of light emission.

<sup>2</sup>Estimated Sound Pressure levels starting from the one measured at the point of maximum noise emissions at 2 m.

Serie Lucciola	Serie Architectural	Serie Halled	Serie Hyperion					Serie Cyclorama	
30W Pinspot	50W Fresnel, PC, Profile	85W Downlight	100W Fresnel, PC, Profile	200W Fresnel, PC, Profile	300W Fresnel, PC, Profile	300W Followspot	700W Fresnel, PC, Profile	700W Followspot	300W Cyclorama

The total sound power level  $L_{WA}$  is equal to 33.7 dBA (0.1 – 10 kHz, ref.  $1 \times 10^{-12}$  W).

## DMX PERSONALITIES

White			
	1CH 8 BIT	3CH 8 BIT	6CH 16 BIT
1 ch	DIMMER	DIMMER	DIMMER
2 ch		STROBO+STORE	DIMMER FINE
3 ch		SERVICE	DELAY
4 ch			FAN
5 ch			STROBO+STORE
6 ch			SERVICE
7 ch			
8 ch			
9 ch			
10 ch			

Tunable White				
EASY 8 BIT	SPLIT 8 BIT	SPLIT 16 BIT	STUDIO 16 BIT	THEATRE FULL 16 BIT
DIMMER	DIMMER	DIMMER	DIMMER	DIMMER
CCT LINEAR	WW	DIMMER FINE	DIMMER FINE	DIMMER FINE
	CW	WW	CCT PRESET	CCT LINEAR
	STROBO+STORE	WW FINE	WW +/-	DELAY
	SERVICE	CW	CW +/-	FAN
		CW FINE	DELAY	STROBO+STORE
		DELAY	FAN	SERVICE
		FAN	STROBO+STORE	
		STROBO+STORE	SERVICE	
		SERVICE		

8C						
	EASY 8 BIT	HSIC 8 BIT	RGBACL+WW+CW 8 BIT	RGBACL+WW+CW 16 BIT	THEATER 16 BIT	STUDIO 16 BIT
1 ch	DIMMER	DIMMER	DIMMER	DIMMER	DIMMER	DIMMER
2 ch	ROSCO FILTERS	HUE	RED	DIMMER FINE	DIMMER FINE	DIMMER FINE
3 ch	LEE FILTERS	HUE FINE	GREEN	RED	RED	RED
4 ch	CCT PRESET	SATURATION	BLUE	RED FINE	RED FINE	RED FINE
5 ch		CCT LINEAR	AMBER	GREEN	GREEN	GREEN
6 ch		STROBO+STORE	CYAN	GREEN FINE	GREEN FINE	GREEN FINE
7 ch		SERVICE	LIME	BLUE	BLUE	BLUE
8 ch			WW	BLUE FINE	BLUE FINE	BLUE FINE
9 ch			CW	AMBER	AMBER	AMBER
10 ch			STROBO+STORE	AMBER FINE	AMBER FINE	AMBER FINE
11 ch			SERVICE	CYAN	CYAN	CYAN
12 ch				CYAN FINE	CYAN FINE	CYAN FINE
13 ch				LIME	LIME	LIME
14 ch				LIME FINE	LIME FINE	LIME FINE
15 ch				WW	WW	WW
16 ch				WW FINE	WW FINE	WW FINE
17 ch				CW	CW	CW
18 ch				CW FINE	CW FINE	CW FINE
19 ch					ROSCO FILTERS	ROSCO FILTERS
20 ch					LEE FILTERS	LEE FILTERS
21 ch					SATURATION	CCT STEPS
22 ch					CCT LINEAR	GREEN +/-
23 ch					GREEN +/-	DELAY
24 ch					DELAY	FAN
25 ch					FAN	STROBO+STORE
26 ch					STROBO+STORE	SERVICE
27 ch					SERVICE	FREE 1
28 ch					FREE 1	FREE 2
29 ch					FREE 2	

### What is in the box

- Fixture
- 2m H05RN-F cable with powerCON TRUE1 female cable connector
- Safety instructions

### Accessories

#### FIXTURE

- Filter frame **TC HY 700**
- 4D rotatable barndoors **PL 4 HY 700**
- C-hook for 40-50mm, M10 **GAC**
- Half coupler max 075kg, 48-50, M10 **HC/075**
- Safety rope, 80cm with spring-clamp **FUNE**
- Iris diaphragm **DIA HY 700**
- Rotatable gobo-holder type B **PGB HY 700**

#### MOVEMENT SYSTEM

- Pole Operated, 2-way Pan and Tilt **PO/2 HY700**
- Pole Operated, 3-way Pan, Tilt and Focus **PO/3 HY700**

Serie Lucciola	Serie Architectural	Serie Halled	Serie Hyperion							Serie Cyclorama
30W Pinspot	50W Fresnel, PC, Profile	85W Downlight	100W Fresnel, PC, Profile	200W Fresnel, PC, Profile	300W Fresnel, PC, Profile	300W Followspot	700W Fresnel, PC, Profile	700W Followspot	300W Cyclorama	

## LIGHT OUTPUT

Model	Type	CT	(measure at)	CRI	TLCI	TM-30	Lumen (max)	Beam	Lux	Ø Beam	Lux	Ø Beam	Lux	Ø Beam	Lux	Ø Beam	Lux	Ø Beam	
FN HY LED 700	WW	3200K	3200K	97	97	94	47.250	11°	22.860	0,8	10.160	1,1	5.715	1,5	3.658	1,9	2.540	2,3	
								53°	3.781	4,0	1.681	5,9	945	7,9	605	9,9	420	11,9	
	CW	5600K	5600K	97	97	94	48.600	11°	25.584	0,8	11.371	1,1	6.396	1,5	4.093	1,9	2.843	2,3	
								53°	4.232	4,0	1.881	5,9	1.058	7,9	677	9,9	470	11,9	
	TW	2700-6500K	5600K	95	92	93	40.950	11°	23.097	0,8	10.265	1,1	5.774	1,5	3.695	1,9	2.566	2,3	
								53°	3.821	4,0	1.698	5,9	955	7,9	611	9,9	425	11,9	
	8C	1500-20000K	Full	97	92	94	38.830	11°	14.963	0,8	6.650	1,1	3.741	1,5	2.394	1,9	1.663	2,3	
								53°	2.475	4,0	1.100	5,9	619	7,9	396	9,9	275	11,9	
										4 m		6 m		8 m		10 m		12 m	

Model	Type	CT	(measure at)	CRI	TLCI	TM-30	Lumen (max)	Beam	Lux	Ø Beam	Lux	Ø Beam	Lux	Ø Beam	Lux	Ø Beam	Lux	Ø Beam	
PC HY LED 700	WW	3200K	3200K	97	97	94	47.250	13°	23.547	0,9	10.465	1,4	5.887	1,8	3.768	2,3	2.616	2,7	
								54°	4.297	4,0	1.910	6,1	1.074	8,1	688	10,1	477	12,1	
	CW	5600K	5600K	97	97	94	48.600	13°	26.353	0,9	11.713	1,4	6.588	1,8	4.217	2,3	2.928	2,7	
								54°	4.809	4,0	2.137	6,1	1.202	8,1	769	10,1	534	12,1	
	TW	2700-6500K	5600K	95	92	93	40.950	13°	23.791	0,9	10.574	1,4	5.948	1,8	3.807	2,3	2.643	2,7	
								54°	4.341	4,0	1.930	6,1	1.085	8,1	695	10,1	482	12,1	
	8C	1500-20000K	Full	97	92	94	38.830	13°	15.413	0,9	6.850	1,4	3.853	1,8	2.466	2,3	1.713	2,7	
								54°	2.813	4,0	1.250	6,1	703	8,1	450	10,1	313	12,1	
										4 m		6 m		8 m		10 m		12 m	

Model	Type	CT	(measure at)	CRI	TLCI	TM-30	Lumen (max)	Beam	Lux	Ø Beam	Lux	Ø Beam	Lux	Ø Beam	Lux	Ø Beam	Lux	Ø Beam	
PR HY LED 700 ZS	WW	3200K	3200K	95	92	94	47.250	8°	65.339	0,6	29.039	0,8	16.335	1,1	10.454	1,4	7.260	1,7	
								25°	11.660	1,8	5.182	2,6	2.915	3,5	1.866	4,4	1.296	5,3	
	CW	5600K	5600K	95	92	94	48.600	8°	73.125	0,6	32.500	0,8	18.281	1,1	11.700	1,4	8.125	1,7	
								25°	13.050	1,8	5.800	2,6	3.263	3,5	2.088	4,4	1.450	5,3	
	TW	2700-6500K	5600K	95	92	93	40.950	8°	66.016	0,6	29.340	0,8	16.504	1,1	10.563	1,4	7.335	1,7	
								25°	14.455	1,8	6.425	2,6	3.614	3,5	2.313	4,4	1.606	5,3	
	8C	1500-20000K	Full	97	92	94	38.830	8°	61.107	0,6	27.159	0,8	15.277	1,1	9.777	1,4	6.790	1,7	
								25°	10.905	1,8	4.847	2,6	2.726	3,5	1.745	4,4	1.212	5,3	
	PR HY LED 700 ZW	WW	3200K	3200K	95	92	94	47.250	20°	16.124	1,4	7.166	2,1	4.031	2,8	2.580	3,5	1.792	4,2
									40°	4.322	2,9	1.921	4,3	1.081	5,8	692	7,2	480	8,7
		CW	5600K	5600K	95	92	94	48.600	20°	18.045	1,4	8.020	2,1	4.511	2,8	2.887	3,5	2.005	4,2
									40°	4.838	2,9	2.150	4,3	1.209	5,8	774	7,2	538	8,7
TW		2700-6500K	5600K	95	92	93	40.950	20°	16.291	1,4	7.240	2,1	4.073	2,8	2.607	3,5	1.810	4,2	
								40°	5.358	2,9	2.382	4,3	1.340	5,8	857	7,2	595	8,7	
8C		1500-20000K	Full	97	92	94	38.830	20°	15.079	1,4	6.702	2,1	3.770	2,8	2.413	3,5	1.675	4,2	
								40°	4.042	2,9	1.797	4,3	1.011	5,8	647	7,2	449	8,7	
									4 m		6 m		8 m		10 m		12 m		

### How to... (video tutorial)



[...set DMX personality and DMX address](#)

[...emulate a halogen lamp](#)

[...avoid acoustic and visual disturbances](#)

[...set stand alone and master-slave](#)

[...increase light output +20%](#)

[...set the LED calibration](#)

[...set the colour custom presets](#)

[User manual](#)

[Contact Sales Office](#)

Serie Lucciola	Serie Architectural	Serie Halled	Serie Hyperion					Serie Cyclorama	
30W Pinspot	50W Fresnel, PC, Profile	85W Downlight	100W Fresnel, PC, Profile	200W Fresnel, PC, Profile	300W Fresnel, PC, Profile	300W Followspot	700W Fresnel, PC, Profile	700W Followspot	300W Cyclorama

**PHOTOMETRIC DATA**

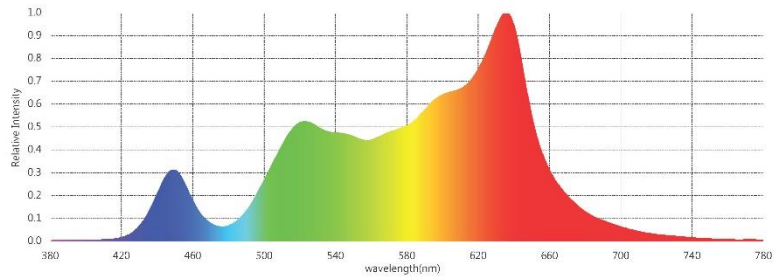
Conditions during measurements:

- LED: WW
- Test in hemi-anechoic room
- Temperature: 16°C
- Relative humidity: 61%
- Distance: 2m

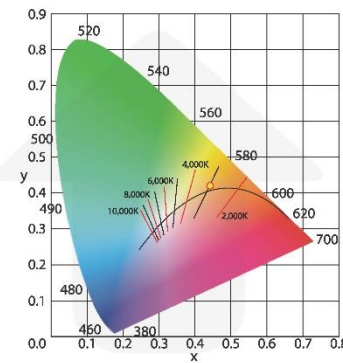
Parameters

CIE_x	0.4421
CIE_y	0.4203
CIE_u'	0.2470
CIE_v'	0.5284
CCT	3043 K
Duv	0.0056
CRI (Ra)(R1~R8)	95
CRI (Re) (R1-R15)	93
CQS	92
TLCI(Qa)	82
GAI	52
TM-30-18 Rf	93
TM-30-18 Rg	103
Illuminance	2,875 lux
Foot Candle	267.1 fc
PPFD (400-700nm)	41.54 $\mu\text{mol}/\text{m}^2\text{s}$
$\lambda_p$	636 nm
$\lambda_D$	581 nm
Purity (Pe)	60 %
SP Ratio	1.4
Circadian Stimulus	0.60
Circadian Light	2,691
Flicker Percentage	41 %
Flicker Index	0.11
Flicker Frequency	135 Hz

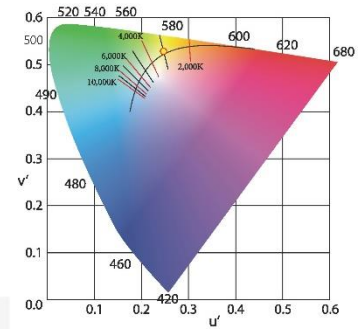
Spectrum



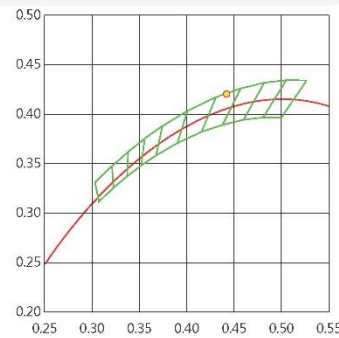
CIE 1931



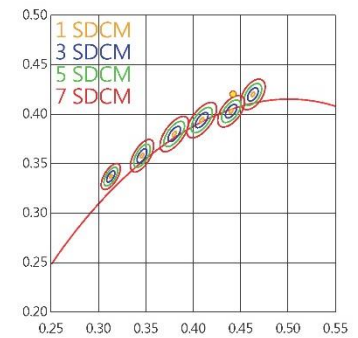
CIE 1976



C78.377 - 2017



IEC-SDCM



CRI (Re) (R1-R15)

R1	98	R6	98	R11	82
R2	96	R7	96	R12	85
R3	90	R8	97	R13	99
R4	89	R9	87	R14	93
R5	97	R10	90	R15	96

TM-30-18

