

| Serie Lucciola | Serie Architectural | Serie Halled | Serie Hyperion | | | | | | Serie Cyclorama |
|----------------|-----------------------------|------------------|------------------------------|------------------------------|------------------------------|--------------------|------------------------------|--------------------|-------------------|
| 30W Pinspot | 50W Fresnel, PC, Profile | 85W Downlight | 100W Fresnel, PC, Profile | 200W Fresnel, PC, Profile | 300W Fresnel, PC, Profile | 300W Followspot | 700W Fresnel, PC, Profile | 700W Followspot | 300W Cyclorama |

SOURCE

- **200W LED**
- For **LUMINOUS FLUX** and **COLOR RENDERING INDEX (CRI)** refer to the related table

HOUSING

- Highly resistant body in **extruded aluminum** and **techno-polymer** body
- **IP 20**
- Finishing: **black (other RAL color on request)**

ELECTRICAL

- Power consumption: 200 W
- Power supply: 100-240 V – 50/60 Hz
- PF>0.94/230VAC PF>0.98/115VAC at full load

THERMAL MANAGEMENT

- Wide ventilation slots for better LED cooling with 3 selectable FAN MODE
- High efficiency heat pipe cooling system
- Ta max 40°C

CONNECTION

- Power connector: chassis PowerCON TRUE1 In/Out
- Additional cable: 2m H05RN-F cable with powerCON TRUE1 female cable connector
- DMX: XLR 5-pole In/Out panel connectors

OPTICS

- **150mm high-quality glass lens / AR coating**
- Focus: manual
- Gobo size: B (only for Profile)
- For beam angles refer to the related table

OPTIONS

- Pole Operated yokes
 - ARC Motorized yokes
- more info [here](#)

COMPLIANCE

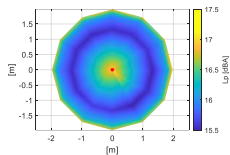
- CE
- EN 60598-1; EN 60598-2-17
- SSL Licensing Program
- Manufactured in Italy with Quality System ISO 9001:2015

NOISE LEVEL DATA (silent mode)

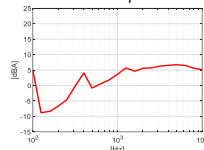
Conditions during measurements:

- Test in hemi-anechoic room
- Temperature: 22°C
- Relative humidity: 79%
- Radius of spherical measuring surface: 2m

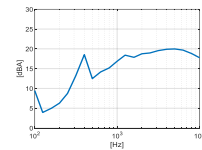
Diagram of Sound Pressure level L_p [dBA], the red point identifies the direction of maximum noise emission ¹



Sound pressure level spectrum [dBA] measured at maximum noise emission point



Sound power level spectrum L_{WA} [dBA]



Total sound pressure level L_p (0.1 – 10 kHz, ref. 2×10^{-5} Pa) at different distances²:

| Distance | 1 m | 2 m | 4 m | 6 m |
|----------------------------|----------|----------|----------|---------|
| Sound pressure level L_p | 23.1 dBA | 17.1 dBA | 11.1 dBA | 7.6 dBA |

The total sound power level L_{WA} is equal to **30.2 dBA** (0.1 – 10 kHz, ref. 1×10^{-12} W).

SOFTWARE FUNCTIONS

- **ESD**: 8bit or 16bit
- Up to 6 **DIMMING CURVE Mark-II**
- **LED DELAY**: from 0 to 2000ms
- **AMBER SHIFT**, in combination whit HALO dimming curve and LED delay, in order to emulate the performances of a halogen lamp (only for 6C version)
- PWM LED 500Hz-20KHz
- **± GREEN** in order to guarantee a fine adjustment of green component of CCT (only for 6C version)
- **OUTPUT FREQUENCY** in order to remove flickering
- **LED BOOST** in order to increase +20% the light output of a fixture when for a tint or CCT when not all LED channels are at full
- **FAN MODE**: selectable from fixture (AUTO, STANDARD, SILENT) or remote from DMX
- **LED CALIBRATION** in order to adjust the tints of a group of fixtures when/ff they aren't aligned, despite being set with the same DMX values (only for RGBW, 6C versions)
- **SERVICE CHANNEL** in order to control all the settings that are normally set from the fixture by using a console
- **STAND-ALONE** and **MASTER AND SLAVE** in order to control one or more fixtures without using a console, creating one or multi scenes
- **DISPLAY ROTATION** and **DISPLAY ON/OFF**
- **BOARD TEMPERATURE** and **CHIP TEMPERATURE** in order to monitor how the fixture works **Mark-II**
- **WIRELESS DMX** ready **Mark-II**
- Hour-counter on single LED
- Storage and factory recovery
- Upgradable firmware via DMX/USB tool
- Advanced remote settings (**RDM**) for all parameters via DMX
- **ERROR LIST** in order to display errors that can occur

COLOR and CCT PRESETS

RGBW:

- Manual/DMX control:
 - o standard (45) + CCT (2700-8000K) + custom (10)

6C:

- Manual control **Mark-II**
 - o MANUAL PRESET: CCT (9) + LEE FILTERS (66) + custom (10)
 - o MANUAL COLOUR: LEE filters (66) + custom (19)
 - o MANUAL CCT: CCT (36)
- DMX control:
 - o LEE FILTERS channel: standard (241) + custom (14) **Mark-II**
 - o ROSCO FILTERS channel: standard (236) + custom (19) **Mark-II**
 - o CCT channel: TW (2700-6500K) / 6C/8C (1500-20000K) **Mark-II**

DIMENSIONS

| | | |
|---------|--------------|------------------------------|
| FN | 6.0 / 7,5 kg | 350*300*360 / 390*300*450 mm |
| PC | 6.0 / 7,5 kg | 350*300*360 / 390*300*450 mm |
| PR (ZS) | 11.5 Kg | 470*340*760 mm |
| PR (ZW) | 10.0 Kg | 470*340*640 mm |

¹The positive direction of X axis corresponds to the spotlight central axis and points in the direction of light emission.

²Estimated Sound Pressure levels starting from the one measured at the point of maximum noise emissions at 2 m.

| Serie Lucciola | Serie Architectural | Serie Halled | Serie Hyperion | | | | | Serie Cyclorama | |
|----------------|-----------------------------|------------------|------------------------------|------------------------------|------------------------------|--------------------|------------------------------|--------------------|-------------------|
| 30W Pinspot | 50W Fresnel, PC, Profile | 85W Downlight | 100W Fresnel, PC, Profile | 200W Fresnel, PC, Profile | 300W Fresnel, PC, Profile | 300W Followspot | 700W Fresnel, PC, Profile | 700W Followspot | 300W Cyclorama |

DMX PERSONALITIES

| | White | | |
|-------|--------|--------|-------------|
| | 1CH | 2CH | 3CH |
| | 8 BIT | 8 BIT | 16 BIT |
| 1 ch | DIMMER | DIMMER | DIMMER |
| 2 ch | | STROBO | DIMMER FINE |
| 3 ch | | | STROBO |
| 4 ch | | | |
| 5 ch | | | |
| 6 ch | | | |
| 7 ch | | | |
| 8 ch | | | |
| 9 ch | | | |
| 10 ch | | | |

| | Tunable White | | | | |
|------------|---------------|--------------|--------------|--------------|--------------|
| | EASY | SPLIT | SPLIT | STUDIO | THEATRE FULL |
| | 8 BIT | 8 BIT | 16 BIT | 16 BIT | 16 BIT |
| DIMMER | DIMMER | DIMMER | DIMMER | DIMMER | DIMMER |
| CCT LINEAR | WW | DIMMER FINE | DIMMER FINE | DIMMER FINE | DIMMER FINE |
| | CW | WW | CCT PRESET | CCT LINEAR | |
| | STROBO+STORE | WW FINE | WW +/- | DELAY | |
| | SERVICE | CW | CW +/- | FAN | |
| | | CW FINE | DELAY | STROBO+STORE | |
| | | DELAY | FAN | SERVICE | |
| | | FAN | STROBO+STORE | | |
| | | STROBO+STORE | SERVICE | | |
| | | SERVICE | | | |

| | RGBW | | | | |
|-------|---------------|--------------|--------------|---------------|---------------|
| | EASY | HSI | CMY | RGBW | FULL |
| | 8 BIT | 8 BIT | 8 BIT | 8 BIT | 16 BIT |
| 1 ch | DIMMER | DIMMER | DIMMER | DIMMER | DIMMER |
| 2 ch | CCT PRESET | HUE | CYAN | RED | DIMMER FINE |
| 3 ch | COLOUR PRESET | HUE FINE | MAGENTA | GREEN | RED |
| 4 ch | | SATURATION | YELLOW | BLUE | RED FINE |
| 5 ch | | STROBO+STORE | STROBO+STORE | WHITE | GREEN |
| 6 ch | | SERVICE | SERVICE | CCT PRESET | GREEN FINE |
| 7 ch | | | | COLOUR PRESET | BLUE |
| 8 ch | | | | STROBO+STORE | BLUE FINE |
| 9 ch | | | | SERVICE | WHITE |
| 10 ch | | | | | WHITE FINE |
| 11 ch | | | | | CCT PRESET |
| 12 ch | | | | | COLOUR PRESET |
| 13 ch | | | | | DELAY |
| 14 ch | | | | | FAN |
| 15 ch | | | | | STROBO+STORE |
| 16 ch | | | | | SERVICE |

| | 6C | | | | | |
|-------|---------------|--------------|--------------|-------------|---------------|---------------|
| | EASY | HSIC | RGBACL | RGBACL | THEATER | STUDIO |
| | 8 BIT | 8 BIT | 8 BIT | 16 BIT | 16 BIT | 16 BIT |
| 1 ch | DIMMER | DIMMER | DIMMER | DIMMER | DIMMER | DIMMER |
| 2 ch | ROSCO FILTERS | HUE | RED | DIMMER FINE | DIMMER FINE | DIMMER FINE |
| 3 ch | LEE FILTERS | HUE FINE | GREEN | RED | RED | RED |
| 4 ch | CCT PRESET | SATURATION | BLUE | RED FINE | RED FINE | RED FINE |
| 5 ch | | CCT LINEAR | AMBER | GREEN | GREEN | GREEN |
| 6 ch | | STROBO+STORE | CYAN | GREEN FINE | GREEN FINE | GREEN FINE |
| 7 ch | | SERVICE | LIME | BLUE | BLUE | BLUE |
| 8 ch | | | STROBO+STORE | BLUE FINE | BLUE FINE | BLUE FINE |
| 9 ch | | | SERVICE | AMBER | AMBER | AMBER |
| 10 ch | | | | AMBER FINE | AMBER FINE | AMBER FINE |
| 11 ch | | | | CYAN | CYAN | CYAN |
| 12 ch | | | | CYAN FINE | CYAN FINE | CYAN FINE |
| 13 ch | | | | LIME | LIME | LIME |
| 14 ch | | | | LIME FINE | LIME FINE | LIME FINE |
| 15 ch | | | | | ROSCO FILTERS | ROSCO FILTERS |
| 16 ch | | | | | LEE FILTERS | LEE FILTERS |
| 17 ch | | | | | SATURATION | CCT STEPS |
| 18 ch | | | | | CCT LINEAR | GREEN +/- |
| 19 ch | | | | | GREEN +/- | DELAY |
| 20 ch | | | | | DELAY | FAN |
| 21 ch | | | | | FAN | STROBO+STORE |
| 22 ch | | | | | STROBO+STORE | SERVICE |
| 23 ch | | | | | SERVICE | FREE 1 |
| 24 ch | | | | | FREE 1 | FREE 2 |
| 25 ch | | | | | FREE 2 | |

LIGHT OUTPUT



How to... (video tutorial)

[...set DMX personality and DMX address](#)

[...emulate a halogen lamp](#)

[...avoid acoustic and visual disturbances](#)

[...set stand alone and master-slave](#)

[...increase light output +20%](#)

[...set the LED calibration](#)

[...set the colour custom presets](#)

[User manual](#)

[Contact Sales Office](#)

| Serie Lucciola | Serie Architectural | Serie Halled | Serie Hyperion | | | | | | | | | | | | | | Serie Cyclorama |
|----------------|-----------------------------|------------------|------------------------------|------------------------------|--|------------------------------|--|--------------------|--|------------------------------|--|--------------------|--|-------------------|--|--|-----------------|
| 30W Pinspot | 50W Fresnel, PC, Profile | 85W Downlight | 100W Fresnel, PC, Profile | 200W Fresnel, PC, Profile | | 300W Fresnel, PC, Profile | | 300W Followspot | | 700W Fresnel, PC, Profile | | 700W Followspot | | 300W Cyclorama | | | |

| Model | Type | CT | (measure at) | CRI | TLCI | TM-30 | Lumen | Beam | Lux | Ø Beam | Lux | Ø Beam | Lux | Ø Beam | Lux | Ø Beam | Lux | Ø Beam | Peak CD |
|---------------|------|-------------|--------------|-----|------|-------|--------|------|-------|--------|-------|--------|-------|--------|------|--------|------|--------|---------|
| FN HY LED 200 | WW | 3000K | 3000K | 97 | 97 | 94 | 10.877 | 14° | 3.975 | 1,0 | 1.767 | 1,5 | 994 | 2,0 | 636 | 2,4 | 442 | 2,9 | 63.600 |
| | | | | | | | | 81° | 388 | 6,8 | 172 | 10,1 | 97 | 13,5 | 62 | 16,9 | 43 | 20,3 | 6.200 |
| | NW | 4000K | 4000K | 97 | 97 | 94 | 11.486 | 14° | 4.198 | 1,0 | 1.866 | 1,5 | 1.049 | 2,0 | 672 | 2,4 | 466 | 2,9 | 67.163 |
| | | | | | | | | 81° | 409 | 6,8 | 182 | 10,1 | 102 | 13,5 | 65 | 16,9 | 45 | 20,3 | 6.547 |
| | CW | 5600K | 5600K | 97 | 97 | 94 | 13.401 | 14° | 4.897 | 1,0 | 2.177 | 1,5 | 1.224 | 2,0 | 784 | 2,4 | 544 | 2,9 | 78.356 |
| | | | | | | | | 81° | 477 | 6,8 | 212 | 10,1 | 119 | 13,5 | 76 | 16,9 | 53 | 20,3 | 7.639 |
| | TW | 2700-6500K | 4000K | 95 | 92 | 93 | 6.530 | 13° | 5.594 | 0,9 | 2.486 | 1,4 | 1.398 | 1,8 | 895 | 2,3 | 622 | 2,7 | 89.500 |
| | | | | | | | | 50° | 1.150 | 3,7 | 511 | 5,6 | 288 | 7,4 | 184 | 9,3 | 128 | 11,1 | 18.400 |
| | RGBW | 2700-8000K | Full Ch | 85 | 90 | 90 | 4.506 | 13° | 3.775 | 0,9 | 1.678 | 1,4 | 944 | 1,8 | 604 | 2,3 | 419 | 2,7 | 60.400 |
| | | | | | | | | 50° | 850 | 3,7 | 378 | 5,6 | 213 | 7,4 | 136 | 9,3 | 94 | 11,1 | 13.600 |
| | 6C | 1500-20000K | Full Ch | 97 | 92 | 94 | 5.224 | 13° | 4.475 | 0,9 | 1.989 | 1,4 | 1.119 | 1,8 | 716 | 2,3 | 497 | 2,7 | 71.600 |
| | | | | | | | | 50° | 920 | 3,7 | 409 | 5,6 | 230 | 7,4 | 147 | 9,3 | 102 | 11,1 | 14.720 |
| | | | | | | | | | 4 m | | 6 m | | 8 m | | 10 m | | 12 m | | |

| Model | Type | CT | (measure at) | CRI | TLCI | TM-30 | Lumen | Beam | Lux | Ø Beam | Lux | Ø Beam | Lux | Ø Beam | Lux | Ø Beam | Lux | Ø Beam | Peak CD |
|---------------|------|-------------|--------------|-----|------|-------|--------|------|-------|--------|-------|--------|-----|--------|------|--------|------|--------|---------|
| PC HY LED 200 | WW | 3000K | 3000K | 97 | 97 | 94 | 10.555 | 16° | 2.170 | 1,1 | 964 | 1,7 | 543 | 2,2 | 347 | 2,8 | 241 | 3,3 | 34.720 |
| | | | | | | | | 87° | 378 | 7,5 | 168 | 11,3 | 94 | 15,0 | 60 | 18,8 | 42 | 22,5 | 6.040 |
| | NW | 4000K | 4000K | 97 | 97 | 94 | 11.146 | 16° | 2.292 | 1,1 | 1.018 | 1,7 | 573 | 2,2 | 367 | 2,8 | 255 | 3,3 | 36.665 |
| | | | | | | | | 87° | 399 | 7,5 | 177 | 11,3 | 100 | 15,0 | 64 | 18,8 | 44 | 22,5 | 6.378 |
| | CW | 5600K | 5600K | 97 | 97 | 94 | 13.004 | 16° | 2.673 | 1,1 | 1.188 | 1,7 | 668 | 2,2 | 428 | 2,8 | 297 | 3,3 | 42.776 |
| | | | | | | | | 87° | 465 | 7,5 | 207 | 11,3 | 116 | 15,0 | 74 | 18,8 | 52 | 22,5 | 7.441 |
| | TW | 2700-6500K | 4000K | 95 | 92 | 93 | 5.991 | 15° | 3.844 | 1,0 | 1.708 | 1,6 | 961 | 2,1 | 615 | 2,6 | 427 | 3,1 | 61.500 |
| | | | | | | | | 50° | 847 | 3,7 | 376 | 5,6 | 212 | 7,4 | 136 | 9,3 | 94 | 11,1 | 13.550 |
| | RGBW | 2700-8000K | Full Ch | 85 | 90 | 90 | 4.425 | 15° | 2.750 | 1,0 | 1.222 | 1,6 | 688 | 2,1 | 440 | 2,6 | 306 | 3,1 | 44.000 |
| | | | | | | | | 50° | 653 | 3,7 | 290 | 5,6 | 163 | 7,4 | 104 | 9,3 | 73 | 11,1 | 10.440 |
| | 6C | 1500-20000K | Full Ch | 97 | 92 | 94 | 4.793 | 15° | 3.075 | 1,0 | 1.367 | 1,6 | 769 | 2,1 | 492 | 2,6 | 342 | 3,1 | 49.200 |
| | | | | | | | | 50° | 678 | 3,7 | 301 | 5,6 | 169 | 7,4 | 108 | 9,3 | 75 | 11,1 | 10.840 |
| | | | | | | | | | 4 m | | 6 m | | 8 m | | 10 m | | 12 m | | |

| Model | Type | CT | (measure at) | CRI | TLCI | TM-30 | Lumen | Beam | Lux | Ø Beam | Lux | Ø Beam | Lux | Ø Beam | Lux | Ø Beam | Lux | Ø Beam | Peak CD |
|------------------|------|-------------|--------------|-----|------|-------|-------|------|-------|--------|-------|--------|-------|--------|-------|--------|------|--------|---------|
| PR HY LED 200 ZS | WW | 3000K | 3000K | 97 | 97 | 94 | 3.471 | 15° | 6.550 | 1,0 | 2.911 | 1,6 | 1.638 | 2,1 | 1.048 | 2,6 | 728 | 3,1 | 104.800 |
| | | | | | | | | 30° | 2.295 | 2,1 | 1.020 | 3,2 | 574 | 4,3 | 367 | 5,3 | 255 | 6,4 | 36.720 |
| | NW | 4000K | 4000K | 97 | 97 | 94 | 3.665 | 15° | 6.917 | 1,0 | 3.074 | 1,6 | 1.729 | 2,1 | 1.107 | 2,6 | 769 | 3,1 | 110.672 |
| | | | | | | | | 30° | 2.424 | 2,1 | 1.077 | 3,2 | 606 | 4,3 | 388 | 5,3 | 269 | 6,4 | 38.777 |
| | CW | 5600K | 5600K | 97 | 97 | 94 | 4.276 | 15° | 8.070 | 1,0 | 3.587 | 1,6 | 2.017 | 2,1 | 1.291 | 2,6 | 897 | 3,1 | 129.115 |
| | | | | | | | | 30° | 2.827 | 2,1 | 1.257 | 3,2 | 707 | 4,3 | 452 | 5,3 | 314 | 6,4 | 45.240 |
| | TW | 2700-6500K | 4000K | 95 | 92 | 93 | 3.874 | 15° | 6.997 | 1,0 | 3.110 | 1,6 | 1.749 | 2,1 | 1.120 | 2,6 | 777 | 3,1 | 111.950 |
| | | | | | | | | 30° | 2.072 | 2,1 | 921 | 3,2 | 518 | 4,3 | 332 | 5,3 | 230 | 6,4 | 33.150 |
| | RGBW | 2700-8000K | Full Ch | 85 | 90 | 90 | 2.944 | 15° | 5.318 | 1,0 | 2.363 | 1,6 | 1.329 | 2,1 | 851 | 2,6 | 591 | 3,1 | 85.082 |
| | | | | | | | | 30° | 1.575 | 2,1 | 700 | 3,2 | 394 | 4,3 | 252 | 5,3 | 175 | 6,4 | 25.194 |
| | 6C | 1500-20000K | Full Ch | 97 | 92 | 94 | 3.099 | 15° | 5.598 | 1,0 | 2.488 | 1,6 | 1.399 | 2,1 | 896 | 2,6 | 622 | 3,1 | 89.560 |
| | | | | | | | | 30° | 1.658 | 2,1 | 737 | 3,2 | 414 | 4,3 | 265 | 5,3 | 184 | 6,4 | 26.520 |
| PR HY LED 200 ZW | WW | 3000K | 3000K | 97 | 97 | 94 | 3.647 | 25° | 3.900 | 1,8 | 1.733 | 2,6 | 975 | 3,5 | 624 | 4,4 | 433 | 5,3 | 62.400 |
| | | | | | | | | 50° | 1.358 | 3,7 | 603 | 5,6 | 339 | 7,4 | 217 | 9,3 | 151 | 11,1 | 21.720 |
| | NW | 4000K | 4000K | 97 | 97 | 94 | 3.851 | 25° | 4.119 | 1,8 | 1.830 | 2,6 | 1.030 | 3,5 | 659 | 4,4 | 458 | 5,3 | 65.896 |
| | | | | | | | | 50° | 1.434 | 3,7 | 637 | 5,6 | 358 | 7,4 | 229 | 9,3 | 159 | 11,1 | 22.937 |
| | CW | 5600K | 5600K | 97 | 97 | 94 | 4.493 | 25° | 4.805 | 1,8 | 2.135 | 2,6 | 1.201 | 3,5 | 769 | 4,4 | 534 | 5,3 | 76.878 |
| | | | | | | | | 50° | 1.672 | 3,7 | 743 | 5,6 | 418 | 7,4 | 268 | 9,3 | 186 | 11,1 | 26.759 |
| | TW | 2700-6500K | 4000K | 95 | 92 | 93 | 4.233 | 25° | 4.176 | 1,8 | 1.856 | 2,6 | 1.044 | 3,5 | 668 | 4,4 | 464 | 5,3 | 66.820 |
| | | | | | | | | 50° | 1.320 | 3,7 | 586 | 5,6 | 330 | 7,4 | 211 | 9,3 | 147 | 11,1 | 21.112 |
| | RGBW | 2700-8000K | Full Ch | 85 | 90 | 90 | 3.093 | 25° | 3.052 | 1,8 | 1.356 | 2,6 | 763 | 3,5 | 488 | 4,4 | 339 | 5,3 | 48.830 |
| | | | | | | | | 50° | 964 | 3,7 | 429 | 5,6 | 241 | 7,4 | 154 | 9,3 | 107 | 11,1 | 15.428 |
| | 6C | 1500-20000K | Full Ch | 97 | 92 | 94 | 3.256 | 25° | 3.213 | 1,8 | 1.428 | 2,6 | 803 | 3,5 | 514 | 4,4 | 357 | 5,3 | 51.400 |
| | | | | | | | | 50° | 1.015 | 3,7 | 451 | 5,6 | 254 | 7,4 | 162 | 9,3 | 113 | 11,1 | 16.240 |
| | | | | | | | | | 4 m | | 6 m | | 8 m | | 10 m | | 12 m | | |

What is in the box

- Fixture

Accessories

How to... (video tutorial)

- [...set DMX personality and DMX address](#)
- [...emulate a halogen lamp](#)
- [...avoid acoustic and visual disturbances](#)
- [... set stand alone and master-slave](#)
- [...increase light output +20%](#)
- [...set the LED calibration](#)
- [...set the colour custom presets](#)

[User manual](#)

[Contact Sales Office](#)



| Serie Lucciola | Serie Architectural | Serie Halled | Serie Hyperion | | | | | | Serie Cyclorama |
|----------------|-----------------------------|------------------|------------------------------|------------------------------|------------------------------|--------------------|------------------------------|--------------------|-------------------|
| 30W Pinspot | 50W Fresnel, PC, Profile | 85W Downlight | 100W Fresnel, PC, Profile | 200W Fresnel, PC, Profile | 300W Fresnel, PC, Profile | 300W Followspot | 700W Fresnel, PC, Profile | 700W Followspot | 300W Cyclorama |

- 2m H05RN-F cable with powerCON TRUE1 female cable connector
- Safety instructions

FIXTURE

- Filter frame **TC HY 200**
- 4D rotatable barndoors **PL 4 HY 200**
- C-hook for 40-50mm, M10 **GAC**
- Half coupler max 075kg, 48-50, M10 **HC/075**
- Safety rope, 80cm with spring-clamp **FUNE**
- Iris diaphragm **DIA HY**
- Rotatable gobo-holder type B **PGB HY**
- Adaptor cone with framing shutters, for market-standard fixed optics **PR HY CONE**

MOVEMENT SYSTEM

- Pole Operated, 2-way Pan and Tilt **PO/2 HY200**
- Pole Operated, 3-way Pan, Tilt and Focus **PO/3 HY200**

| Serie Lucciola | Serie Architectural | Serie Halled | Serie Hyperion | | | | | | Serie Cyclorama |
|----------------|-----------------------------|------------------|------------------------------|------------------------------|------------------------------|--------------------|------------------------------|--------------------|-------------------|
| 30W Pinspot | 50W Fresnel, PC, Profile | 85W Downlight | 100W Fresnel, PC, Profile | 200W Fresnel, PC, Profile | 300W Fresnel, PC, Profile | 300W Followspot | 700W Fresnel, PC, Profile | 700W Followspot | 300W Cyclorama |

PHOTOMETRIC DATA

Conditions during measurements:

- LED: WW
- Test in hemi-anechoic room
- Temperature: 16°C
- Relative humidity: 61%
- Distance: 2m

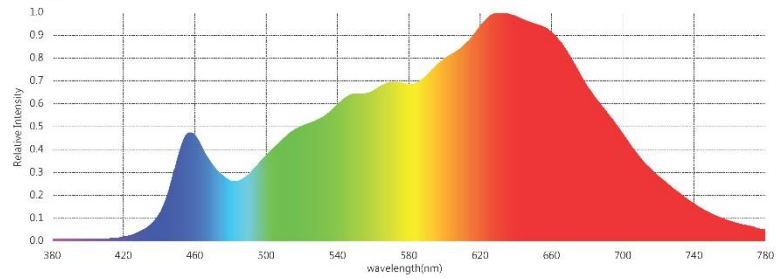
Parameters

| | |
|--------------------|--|
| CIE_x | 0.4334 |
| CIE_y | 0.4058 |
| CIE_u' | 0.2475 |
| CIE_v' | 0.5215 |
| CCT | 3075 K |
| Duv | 0.0012 |
| CRI (Ra)(R1~R8) | 98 |
| CRI (Re) (R1-R15) | 97 |
| CQS | 97 |
| TLCI(Qa) | 99 |
| GAI | 58 |
| TM-30-18 Rf | 94 |
| TM-30-18 Rg | 99 |
| Illuminance | 1,285 lux |
| Foot Candle | 119.4 fc |
| PPFD (400-700nm) | 22.01 $\mu\text{mol}/\text{m}^2\text{s}$ |
| λ_p | 631 nm |
| λ_D | 582 nm |
| Purity (Pe) | 50 % |
| SP Ratio | 1.5 |
| Circadian Stimulus | 0.60 |
| Circadian Light | 1,363 |
| Flicker Percentage | 1 % |
| Flicker Index | 0.00 |
| Flicker Frequency | 136 Hz |

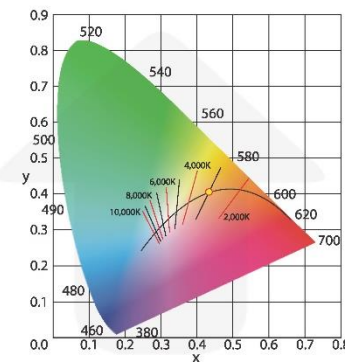
CRI (Re) (R1-R15)

| | | | | | |
|----|----|-----|----|-----|-----|
| R1 | 99 | R6 | 98 | R11 | 99 |
| R2 | 99 | R7 | 99 | R12 | 81 |
| R3 | 96 | R8 | 98 | R13 | 100 |
| R4 | 99 | R9 | 97 | R14 | 97 |
| R5 | 98 | R10 | 96 | R15 | 98 |

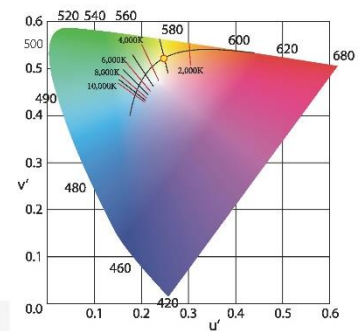
Spectrum



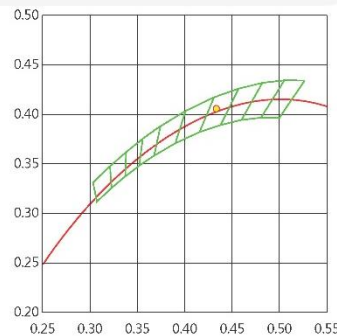
CIE 1931



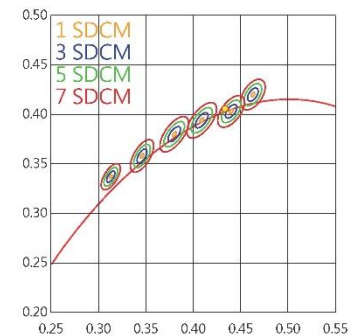
CIE 1976



C78.377 - 2017



IEC-SDCM



TM-30-18

